

centerline®

CENTERED ON SOLUTIONS

 CANADA
BEST
MANAGED
COMPANIES

Platinum
member

STATEMENT OF PURPOSE

TO DESIGN, DEVELOP, MANUFACTURE AND COMMISSION SOLUTIONS TO COMPLEX MATERIAL JOINING PROBLEMS FOR OEMS, TIER SUPPLIERS, AND INTEGRATORS OF THE GLOBAL AUTOMOTIVE, AEROSPACE, AND MASS TRANSIT INDUSTRIES. WE ARE A VERTICALLY INTEGRATED SOLUTION PROVIDER WITH A TRACK RECORD OF TAKING THE RISK OUT OF THE MOST CHALLENGING PROJECTS. WE STAND BY OUR SOLUTIONS AND REMAIN ON SITE UNTIL OUR COMMITMENTS HAVE BEEN REALIZED.

TABLE OF CONTENTS

CenterLine (Windsor) Limited is a Canadian-based, privately held corporation specializing in advanced automation processes and joining technologies that satisfy welding and joining, metal forming, and cold spray applications. A vertically integrated enterprise, CenterLine provides a wide range of product offerings to meet customers' demand in the global marketplace.

From consumable electrode products to complete automated production systems, we have the capabilities to satisfy virtually any need. Innovative R&D, Engineering, Service, and Process Development groups enable CenterLine to provide complete turnkey solutions.

CenterLine's main customers include OEMs and Tier suppliers in the automotive, mass transit, aerospace, and defence industries. Aside from the primary operations in Windsor, Ontario, Canada, we have manufacturing and/or service support facilities in the USA, Mexico, Brazil, Germany, Romania, India, and China to support our customers' international operations.

2

COMPANY OVERVIEW

3

CENTERLINE VALUES

4

CEO STATEMENT

5

CENTERLINE COMMITMENT

6-7

CENTERLINE CONFIGURED
BRAND PRODUCTS

8-9

TURNKEY SYSTEMS

10-19

CENTERLINE DIVISIONS

20-21

GLOBAL AFFILIATES

"THE CURIOUS NATURE OF OUR EMPLOYEES AND THEIR INNOVATIVE METHODS OF DEVELOPING CONCEPTS TO RESOLVE MANUFACTURING ISSUES CONTINUES TO BRING VALUE TO OUR CUSTOMERS, WHILE ALLOWING CENTERLINE TO BUILD UPON THE FOUNDATION OF OUR ORGANIZATION."

JIM KOMAR VP, HUMAN RESOURCES





INCORPORATED IN 1957

Collectively, CenterLine's operations provide a single source of supply for "tips to turnkey" products and services ranging from cold formed cap electrodes all the way to complete production systems. For many leading OEMs, tier part suppliers and system integrators, CenterLine is a recognized valued partner that is truly centered on solutions.



Since 1957, CenterLine's corporate vision has been to develop innovative solutions that enable our customers to exceed their operational, customer, and profit commitments while minimizing risk and stress.

With locations worldwide, we continue to deliver state-of-the-art technologies and processes that assist customers in maintaining their competitive advantage. CenterLine has been awarded over 80 patents and has numerous North American and international patents pending.

CenterLine Is:

An established, international organization with the experience and capabilities needed to satisfy virtually any metal-based part production and assembly requirement. CenterLine strives to be a leader in welding and metal processing solutions with particular expertise in resistance welding, arc welding, and cold spray metal coating applications.



PRIMARY TECHNICAL COMPETENCIES:

JOINING - SPOT, PROJECTION, FASTENER, SEAM, HOT UPSET

METAL FORMING - SHEET PIERCING, STAKING, SHEARING, RIVETING, TUBE BENDING, CUSTOM FORMING, LASER CUTTING

COLD SPRAY - SPRAY FEEDSTOCK DEVELOPMENT, PROCESS PARAMETER OPTIMIZATION, SPRAY NOZZLE & GUN OPTIMIZATION.

**"CENTERLINE HAS STAYED TRUE TO THEIR VALUES
THROUGHOUT THE ENTIRE 65+ YEARS OF BUSINESS."**

STEVE RENAUD VP OF OPERATIONS



VALUES STATEMENT

CenterLine is proud to be a family owned company that embraces the responsibility of supporting our employees and the communities in which we operate. The company provides opportunities to our employees to achieve their personal career goals and provide the premium quality products and services to which CenterLine customers have become accustomed. Living our values everyday benefits all of our stakeholders.



**PURSUe TECHNICAL
EXCELLENCE**

**INVEST IN THE
COMMUNITY**

**RECOGNIZE THE
IMPORTANCE OF
SUPPLIERS IN
CENTERLINE'S
SUCCESS**

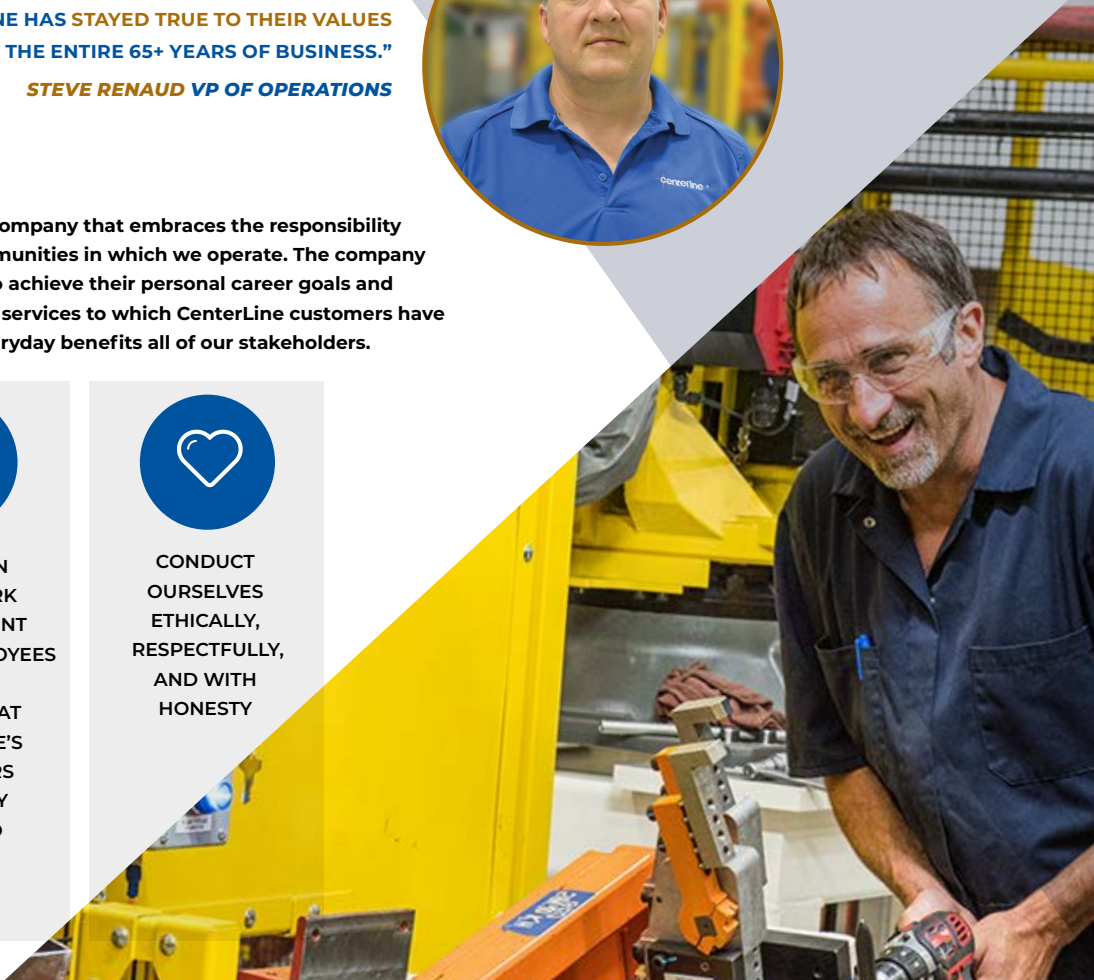


**CREATE AN
IDEAL WORK
ENVIRONMENT
FOR ALL EMPLOYEES**

**ENSURE THAT
CENTERLINE'S
CUSTOMERS
ARE FULLY
SATISFIED**



**CONDUCT
OURSELVES
ETHICALLY,
RESPECTFULLY,
AND WITH
HONESTY**





MICHAEL BENETEAU
CEO



780 FULL TIME EMPLOYEES



1957 - ESTABLISHED



8 GLOBAL LOCATIONS

CEO STATEMENT

In the following pages, I am very pleased to provide you with a glimpse of the capabilities of the great company that my father started in the 1950s and our extremely talented team of employees has created through more than six decades of dedicated effort. Since our humble beginnings, we have been blessed with customers who have pushed us to solve their most challenging production problems. This developed into a strong culture of innovation throughout CenterLine.

"My father is an inventor at heart."

We are very fortunate that several CenterLine team members have picked up the baton from him and continue to create products and solutions that provide our customers with the tools to be more productive in today's highly competitive automotive industry. We are offering these solutions to other systems integrators worldwide to integrate them into their product offerings. If you are new to CenterLine, then I invite you to spend some time with our team, and together we can figure out some innovative solutions that will benefit both of us.

20% 

OVER 150 EMPLOYEES WITH 20+ YEARS TENURE

"WE ARE INTO THE 3RD GENERATION FOR OUR FAMILY WORKING AT CENTERLINE, BUT ALSO FOR MANY OTHER FAMILIES. IT TELLS ME THEY BELIEVE IN THE PLACE. I GUESS ACTIONS SPEAK LOUDER THAN WORDS."

MICHAEL BENETEAU CEO

CENTERLINE COMMITMENT

CenterLine is a modern, vertically integrated, multifaceted company with a wide range of in-house machining and finishing equipment. Our highly trained staff provides strong technical expertise backed by a wealth of real-world experience. These factors allow the company to properly and effectively satisfy our customers' needs and expectations. In most cases, our in-house capabilities enable CenterLine to complete projects without the use of outside resources. Whatever the requirements, our customers can trust CenterLine to fulfill its project responsibilities and provide them with the most competitive process solutions.



CONSISTANT MANUFACTURING

Leading OEMs and Tier 1 companies recognize that establishing reliable and consistent manufacturing practices across all operations is good business. It allows them to effectively control their operations and provides the operational agility to take full advantage of emerging business opportunities inherent to today's rapidly changing market demands.



INTERNATIONAL LOCATIONS

Throughout CenterLine's various international locations, customers can rely on CenterLine to be where they need us to be. No other resistance welding-based company offers the depth of product, engineering and service support.



CONTINUOUS IMPROVEMENT

CenterLine's culture and processes are heavily focused on continuous improvement; it's an environment where both successes and failures drive our offerings. CenterLine's years of practical experience allow the company to deal with universal industry challenges effectively. Through our strong affiliations with key industry associations, we remain active in developing and implementing industry standards and best practices that provide the highest value to our customers.



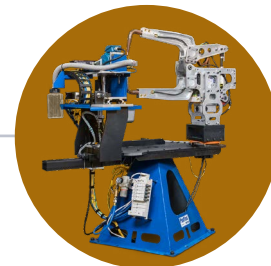
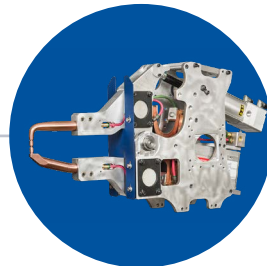
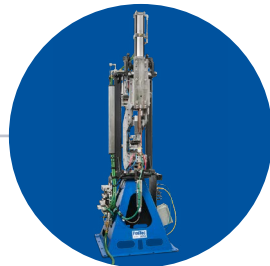
CENTERLINE CONFIGURED BRAND PRODUCTS

CenterLine is passionate about the science and technology related to fastener welding. These techniques continuously evolve to meet the needs of new materials. Building on over 65+ years of experience, CenterLine's team has developed the most comprehensive and innovative lineup of projection welding products in the industry.

Configured Products are pre-engineered, which ship complete with controls and fluid connections, thoroughly tested, with documentation and reference logic to integrate into customers' process easily. Configured product 3D models can be applied during early process layouts. They save our customers design, build, and integration costs, and these proven standardized solutions reduce risk and shorten project timelines.

CenterLine's PedTec™ family has an extensive offering of pedestal-mounted products built as integrated solutions. An example is our pre-engineered spot welding gun on a PedTec™ stand with a KapTec™ cap maintenance station.

Customers integrate configured products into weld cells to complement their process, building "Their World Class Solutions" .



VeriFast™

The VeriFast™ nut/stud detection systems can sense a range of potential weld fault conditions and provide weld controls with real-time feedback for conditions that fall outside programmed weld process parameters.

SoftMount™

The SoftMount™ Gun is designed to mechanically fine adjust its position to a stamped hole to consistently projection weld a fastener. It is ideal for robot applications where part dimensions, hole locations, or tooling are slightly inconsistent.

FlexGun™

The FlexGun™ standard group of welding guns are offered in Pinch and C style Equalizing formats and provide the largest range of gun throat sizes, weld forces, and actuator styles.

KapTec™

CenterLine's KapTec™ product family is designed to automate the cap maintenance across a wide variety of applications. It is designed to dress caps and automate the cap changing process.

PinPoint™

CenterLine's patented PinPoint Solution is a unique product supplied as a configurable solution to feed parts into robotic lines and cells.

The PinPoint Solution is designed to maximize production throughput, optimize operator utilization and part flexibility.

The standard offering comes with part locating pins, vision part verification and orientation, breakaway part positioning and controls, all in one package.

"PINPOINT IS AN INCREDIBLY SIMPLE SOLUTION TO WATCH AND UNDERSTAND, YET IN THE LAST 5 YEARS SINCE ITS INVENTION, IT HAS CONTINUED TO EVOLVE AS WE DEVELOP UNIQUE STRATEGIES FOR ITS USE AND APPLICATION. LIKE MANY OF OUR PRODUCTS, AS OUR CUSTOMERS CHALLENGE US, THE TEAM KEEPS INNOVATING AND REMAINS CENTERED ON SOLUTIONS FOR THEIR NEEDS. I REALLY ENJOY WATCHING A CUSTOMER WATCH THE PINPOINT FOR THE FIRST TIME – YES IT REALLY IS THAT SIMPLE!"

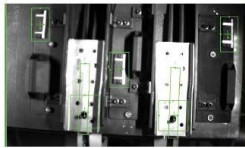
LARRY KOSCIELSKI VP, PROCESS & TECHNOLOGY DEVELOPMENT



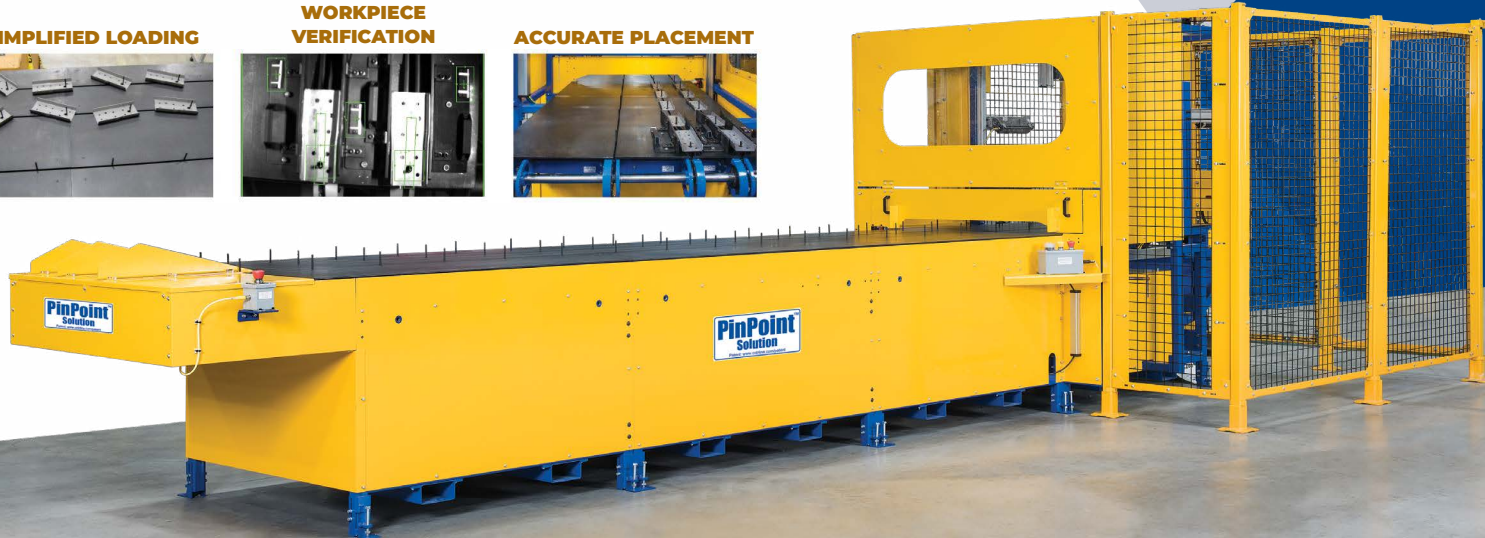
SIMPLIFIED LOADING



WORKPIECE VERIFICATION



ACCURATE PLACEMENT



CENTERLINE TURNKEY SYSTEMS

CenterLine provides a complete manufacturing solution to make assemblies to end-user customer specifications, quality level, and production rate required. CenterLine's machinery integration activities have led to several standard turnkey welding and material handling products. Each development has undergone significant field testing and been integrated into varied production environments to ensure its performance under real-world operating conditions.

Turnkey services and solutions include:

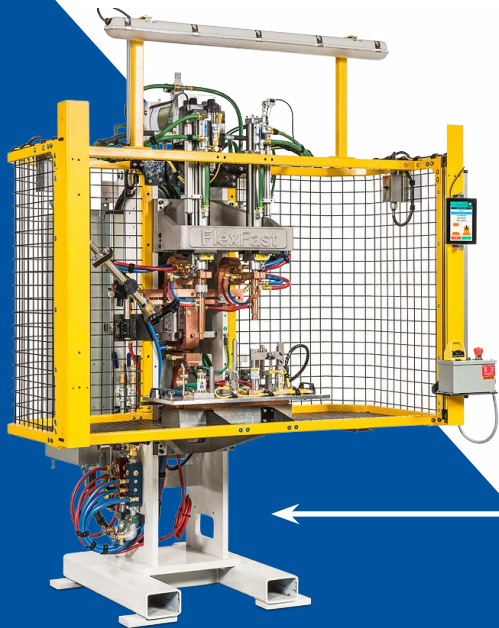
- Full process quoted
- Project management
- Design reviews
- Part development & build submissions
- Process buy-off
- Installation & Commissioning

"ALL OF OUR EMPLOYEES ARE AN INTEGRAL PART OF SERVING OUR CUSTOMERS AND ENSURING THEIR SATISFACTION AND SUCCESS. THIS UNIFIED COMMITMENT ACROSS THE ENTIRE ORGANIZATION REINFORCES THE TEAM BASED APPROACH TO SALES AT CENTERLINE."

PHIL CAMPBELL VP, GLOBAL SALES & MARKETING

FlexFast™

**OFFERS OUTSTANDING PERFORMANCE,
DURABILITY AND RELIABILITY, INCLUDING
A 3 YEAR WARRANTY.**





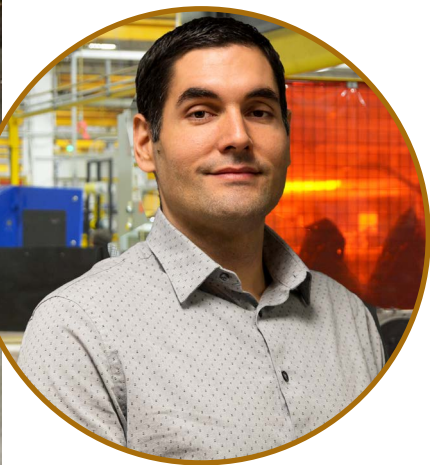
MACHINERY DIVISION



The CenterLine Machinery Division

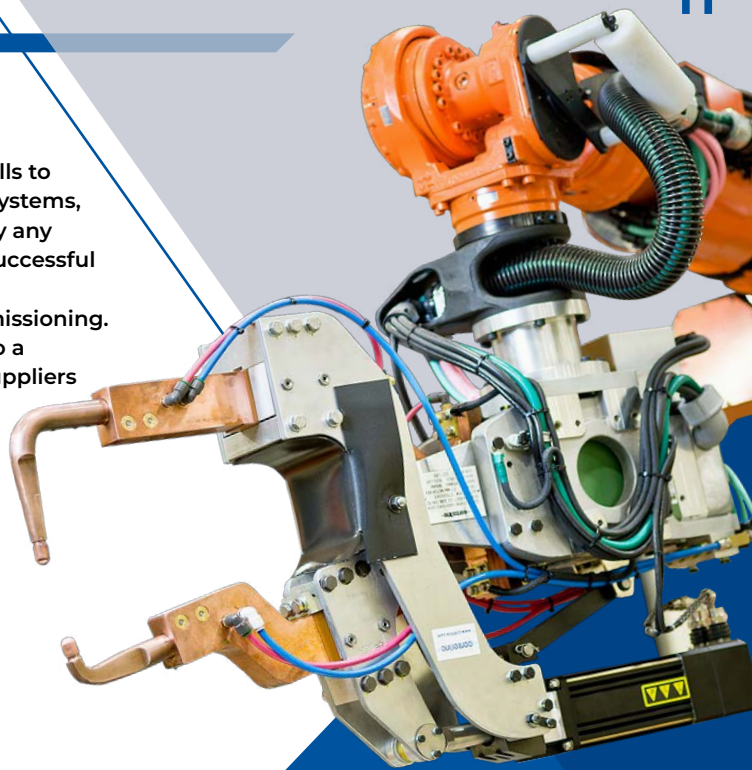
is a complete single-source solutions provider of custom automated assembly systems (resistance, arc & laser welding, metal forming) and related machinery integration components (tooling, fixtures, end effectors, rotary tables, gauging). The custom automation division supplies complete part/process development, machine design, manufacturing, installation, training, service, and project support.

From stand-alone welding cells to fully automated production systems, CenterLine can provide nearly any program support to ensure successful design, build, installation and production equipment commissioning. We are a preferred supplier to a majority of Tier 1 and Tier 2 suppliers operating in North America.



"OUR UNIQUE POSITION OF DOING MACHINERY AS WELL AS PRODUCTS GIVES US THE ABILITY TO SOLVE PROBLEMS AT A BETTER PACE. WE ENGAGE WITH OUR CUSTOMERS, ANALYZING THEIR PROBLEMS, AND WE FORM OUR PRODUCT SOLUTIONS AROUND THE REPEATING PATTERNS THAT WE SEE."

DARRYL BENETEAU CHIEF OPERATING OFFICER



ELECTRODES DIVISION



The CenterLine Electrodes Division

is a recognized leader in the manufacturing and supply of resistance welding consumables. The division offers a variety of standard and custom electrode products that satisfy North American and European standards. All products are available in a range of copper alloys and are manufactured to the highest quality standards.

As a supplier of standard and custom electrodes, caps, and related welding consumables, CenterLine maintains an extensive raw material and finished goods inventory.

In addition to offering an abundance of resistance welding consumable products, the Electrodes Division also supplies insulating materials and bushings, weld gun replacement parts, castings, forgings, shunts, cables, spot welding machine arms and caps, and many other production-related items.

**"WE ARE PROUD TO BE ABLE TO PRODUCE
HIGH QUALITY RESISTANCE WELDING
CONSUMABLES FOR OUR CUSTOMERS. THE
REAL ACHIEVEMENT IS HOW OUR EMPLOYEES'
WORKMANSHIP, PRIDE AND OUR CULTURE DEFINE
THESE PRODUCTS AS INDUSTRY LEADERS."**

***RYAN DITTUS MANUFACTURING MANAGER,
ELECTRODES***



A technician in a blue shirt and safety glasses is working on a complex metal assembly in a factory setting. The assembly is mounted on a stand and has various wires and components attached. A yellow safety fence is in the background.

The CenterLine Components Division

designs and manufactures a broad range of spot welding gun solutions in standard and custom configurations. CenterLine's "FlexGun" designs deliver efficiency, reliability, and weld quality consistency to any production resistance welding need, whether robotic, fixture or portable handheld.

All CenterLine spot welding gun designs are based on CenterLine's low-impact/non-shock design philosophy.

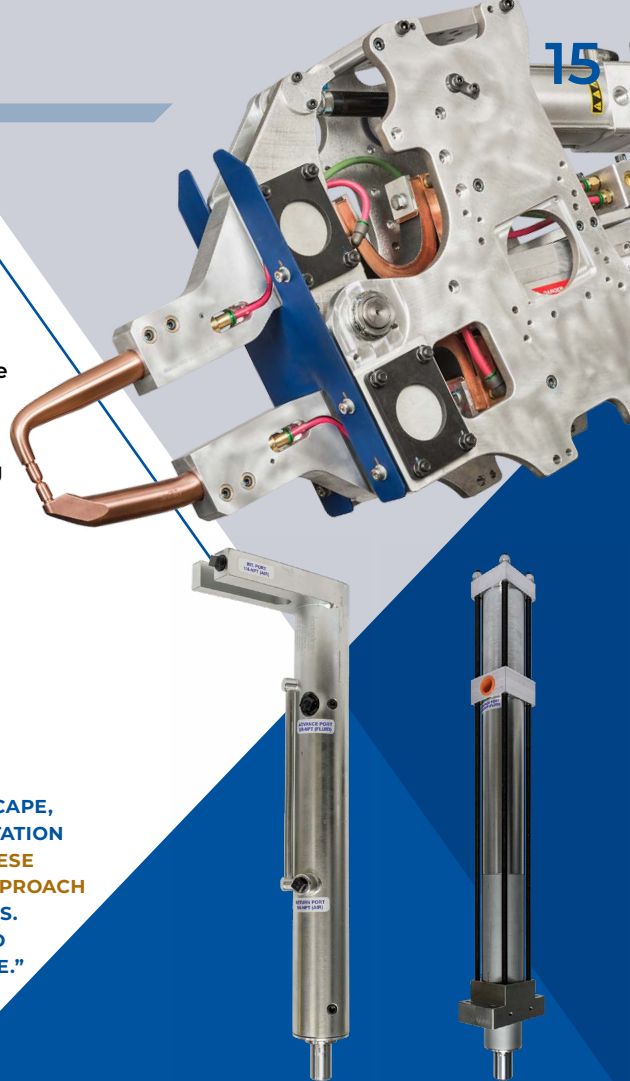


This basic design principle ensures that all CenterLine spot welding guns operate to:

- Decrease shock and vibration to the welding gun and machinery to reduce equipment wear and maximize uptime.
- Reduce operating cost by maximizing consumable life.
- Minimize electrode skidding and misalignment for improved weld quality.
- Many common parts between gun styles to minimize customer inventories.

"WITH THE EVER CHANGING AUTOMOTIVE LANDSCAPE, OUR CUSTOMERS HAVE INCREASED THEIR EXPECTATION FOR QUALITY, PRICE, AND DELIVERY. WE HEAR THESE DEMANDS, WE LISTEN AND TAKE A PROACTIVE APPROACH TO CREATE A PARTNERSHIP WITH OUR CUSTOMERS. WE DELIVER TOP QUALITY COMPETITIVELY PRICED CONSUMABLES, WITH A QUICK TURNAROUND TIME."

**DEAN MERCER DIRECTOR OF OPERATIONS,
ELECTRODES & AUTOMATION COMPONENTS**





MECHATRONICS DIVISION

The CenterLine Mechatronics Division

houses brand-specific product design and manufacturing activities for configured machinery solutions, including developments such as CenterLine's FlexFast™, PedTec™, and PinPoint™ products.

The division manufactures configured products designed with modularity, automation efficiency and speed of implementation at the forefront of our thinking.

SoftMount™

THE SOFTMOUNT™ GUN IS DESIGNED TO MECHANICALLY FINE ADJUST ITS POSITION TO A STAMPED HOLE TO CONSISTENTLY PROJECTION WELD A FASTENER. IT IS IDEAL FOR ROBOT APPLICATIONS WHERE PART DIMENSIONS, HOLE LOCATIONS, OR TOOLING ARE SLIGHTLY INCONSISTENT. OFFERS UNIQUE ADVANTAGES FOR CYCLE TIME, AND CUSTOMERS ARE SEEING SIGNIFICANT IMPROVEMENTS IN OPERATING EFFICIENCY AND CYCLE TIME"

"OUR TEAM MEMBERS WITHIN THE MECHATRONICS DIVISION REALLY DRIVE THE SUCCESS OF THE PRODUCTS. GREAT PRODUCT IDEAS PAIRED WITH AN ADAPTABLE AND SKILLED TEAM HAVE BEEN AN AMAZING COMBINATION."

**ERIC GIRARD CONFIGURED PRODUCTS
BUILD MANAGER**





SST DIVISION

The CenterLine Supersonic Spray Technologies (SST™) Division

designs & manufactures a full range of patented cold-spray metal coating systems for the aerospace, defense, glass, and automotive industries. Cold spray is a cost-effective and practical coating process that is considered part of the Thermal Spray family. SST enables users to apply robust metal coatings to a wide range of surfaces.

Coating characteristics include extremely low oxide entrapment, high densities and high bond/cohesive strengths. SST coatings are extremely machinable (with conventional tooling), have thin or thick build characteristics, and accept dissimilar materials with no galvanic reactions.

The SST Division also supplies powders, as well as a range of OEM production applications and job shop services to protect, repair, restore, refinish, and recoat manufactured products.



The CenterLine Global affiliates are committed to providing the same level of customer support and service that our customers in North America have come to expect from CenterLine Windsor.

CENTERLINE GLOBAL AFFILIATES

CenterLine's Global Affiliates relationships have been formed to support CenterLine's Global Customers. The Global Affiliates are capable to deliver the CenterLine brand that has made the company successful over the last 65+ years.



The first CenterLine Global Affiliates (CGA) were formed in 2003 and 2004 in Romania and Germany to support CenterLine's Global Customers. Since then, the CGA footprint has expanded to seven countries across four continents.



Through the CenterLine Global Affiliates, the company can leverage our collective resources to support Global programs. Global Affiliates bring regional expertise including regulations and Health & Safety.



CGAs are committed to community involvement and social responsibility.



The CGAs have the capability to leverage the global time zones to reduce lead times.



CGAS PROVIDE

250+
GLOBAL
EMPLOYEES

50+
GLOBAL
ENGINEERS

**OVER
\$50 MILLION**
IN GLOBAL SALES

530,000+
SQUARE FEET OF
MANUFACTURING SPACE





CONTACT US

cntrline.com



Platinum member



415 Morton Dr.
Windsor ON
N9J 3T8



Telephone:
+1 519-734-8464



E-mail:
info@cntrline.com