



# Weld Stud Application with Smart Electrode™ Sheet

(Electronic Format)

Please email completed form to: [info@cntrline.com](mailto:info@cntrline.com)

Contact name:

Email:

Company:

Date:

Tel:

Fax:

**Disclaimer:** It is the sole responsibility of the customer to adequately size the stud and stamping for the application.

## 1. Part and Weld Stud Information:

1.1. Is this an existing application?  Yes  No

Stud Part Number (If Known):

Manufacturer:

1.2. Stud drawings are provided with this application:  Yes  No

### 1.3. General Details:

Units of Measurement

Metric (2 dec.)

Imperial (3 dec.)

Part Loading

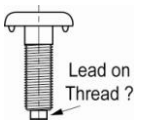
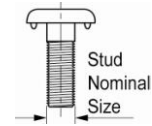
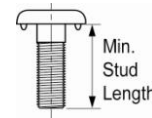
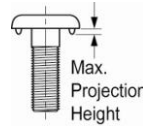
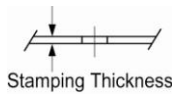
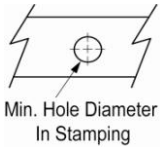
Robot

Manual

Stud Loading

Auto

Manual



(Enter all dimensions below):

<input type="text"/>	<input type="text"/>	<input type="text"/>	<input type="text"/>	<input type="text"/>	<input type="text"/>	<input type="text"/>	<input type="text"/>	<input type="text"/>	<input type="text"/>	<input type="radio"/> Yes <input type="radio"/> No
----------------------	----------------------	----------------------	----------------------	----------------------	----------------------	----------------------	----------------------	----------------------	----------------------	--

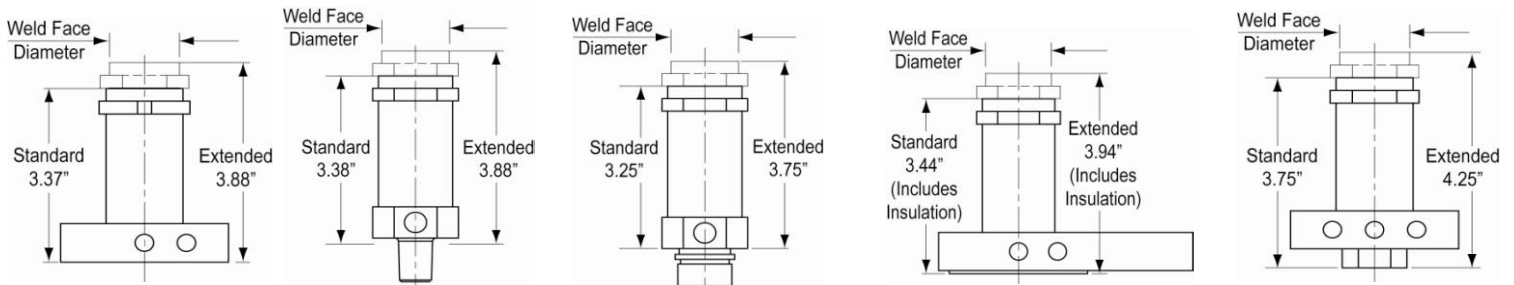
**Note:** Please provide stud CAD drawings when submitting this application form.

## 2. Weld Stud Electrode Smart Bodies (Recommended):

Smart Bodies are recommended for all new applications. For replacement units only, consider section 5. *Weld Stud Electrode Legacy Bodies* below.

### 2.1. Smart Body Styles:

**Note:** Each Standard and Extended dimensions below apply to all body series (200, 300, and 400).



<input type="radio"/> A* (Base Mount)	<input type="radio"/> B (4 RW Taper)	<input type="radio"/> F (7/8-14 Thread)	<input type="radio"/> H* (Base Mount With Cable Lug (17/32" clearance hole for 1/2 screw))	<input type="radio"/> K* (Base Mount with Contact)
	<input type="radio"/> C (5 RW Taper)	<input type="radio"/> G (1-12 Thread)		
	<input type="radio"/> D (6 RW Taper)		<input type="radio"/> J* (Base Mount With Cable Lug (Tapped hole for 1/2-13 screw))	
	<input type="radio"/> E (7 RW Taper)			

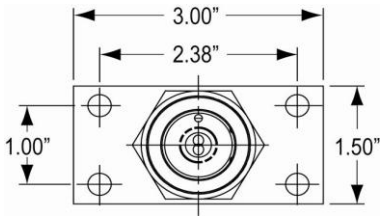
\* Refer to section 3. *Mounting Dimensions for Base Mount Smart Body Styles* below for mounting details.

**CAUTION!** Overall electrode head height may vary according to the stud length.

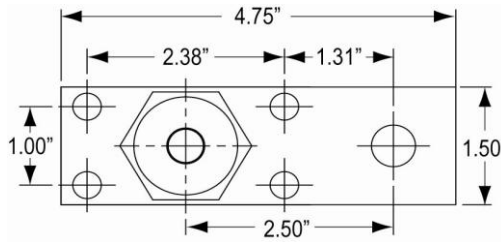
2.2. Body Length:  Standard  Extended

2.3. Series:  200 (0.88" Standard Weld Face Diameter)  300 (1.25" Standard Weld Face Diameter)  400 (1.50" Standard Weld Face Diameter)

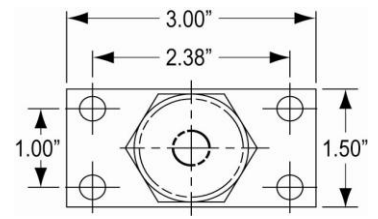
### 3. Mounting Dimensions for Base Mount Smart Body Styles:



**A Style**



**H&J Style**



**K Style**

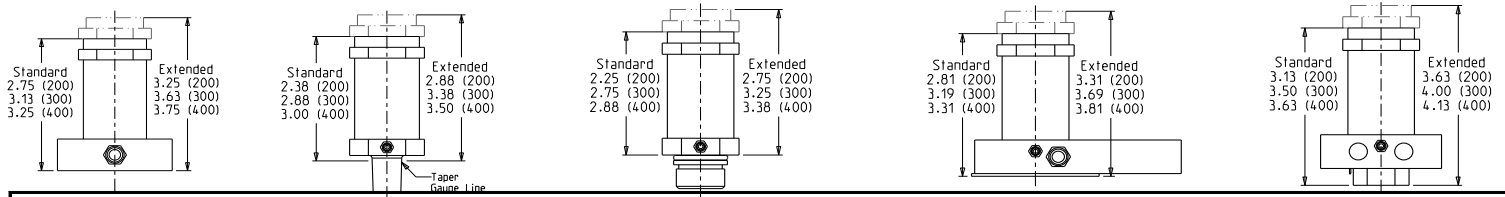
**Note:** Base units come with 1/4-20 screws for mounting.

### 4. Backup (Upper) Electrode:

- CenterLine to Recommend
- Customer to Specify (Consult the CenterLine Resistance Welding Product Guide, page 5-7)
- Fit Stud for Automatic Feeders
- Not Applicable

### 5. Weld Stud Electrode Legacy Bodies:

**Note:** Legacy 200 Series must use extended bodies with Smart Electrode Systems. Standard 200 Series cannot be used with SE Systems.



- A\*\* (Base Mount)
- B\*\*\* (4 RW Taper)
- C (5 RW Taper)
- D (6 RW Taper)
- E (7 RW Taper)
- F (7/8-14 Thread)
- G (1-12 Thread)
- H\*\* (Base Mount With Cable Lug (17/32" clearance hole for 1/2" screw))
- J\*\* (Base Mount With Cable Lug (Tapped hole for 1/2-13" screw))
- K\*\* (Base Mount with Contact)

\*\* For mounting dimensions of the base mount legacy body styles consult the *CenterLine Resistance Welding Product Guide*, page 1-8.

\*\*\* On body style 'B' add .25 to length shown.

**CAUTION!** Overall electrode head height may vary according to the stud length.

### 6. Comments:

Please email completed form to: [info@cntrline.com](mailto:info@cntrline.com)