

Please email completed form to: info@cntrline.com

Contact name:

Email:

Company:

Date:

Tel:

Fax:

Disclaimer: It is the sole responsibility of the customer to adequately size the nut and stamping for the application.

1. Part and Weld Nut Information:

1.1. Is this an existing application ? Yes No

Nut Part Number (If Known):

Manufacturer:

1.2. Nut drawings are provided with this application: Yes No

1.3. General Details:

Units of Measurement

Metric (2 dec.)

Imperial (3 dec.)

Part Loading

Robot

Manual

Nut Loading

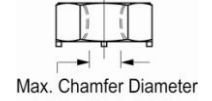
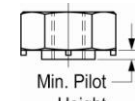
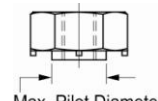
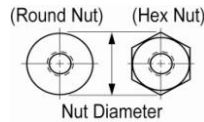
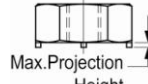
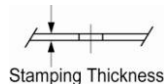
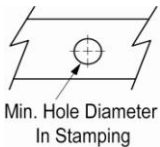
Auto

Manual

Orientation of nut projections

Down

Up



(Enter all dimensions below):

| | | | | | | | |
|--|--|--|--|--|--|--|--|
| | | | | | | | |
|--|--|--|--|--|--|--|--|

Note: Please provide nut CAD drawings when submitting this application form.

2. Pin Information:

Use Pin to Locate Stamping

Yes

No

Pin Clearance to Stamping

0.005 in (0.13 mm)

0.010 in (0.25 mm)

Pin Material

Coated (preferred)

Stainless Steel

Pin Retractable

No

Yes, Clear the Head

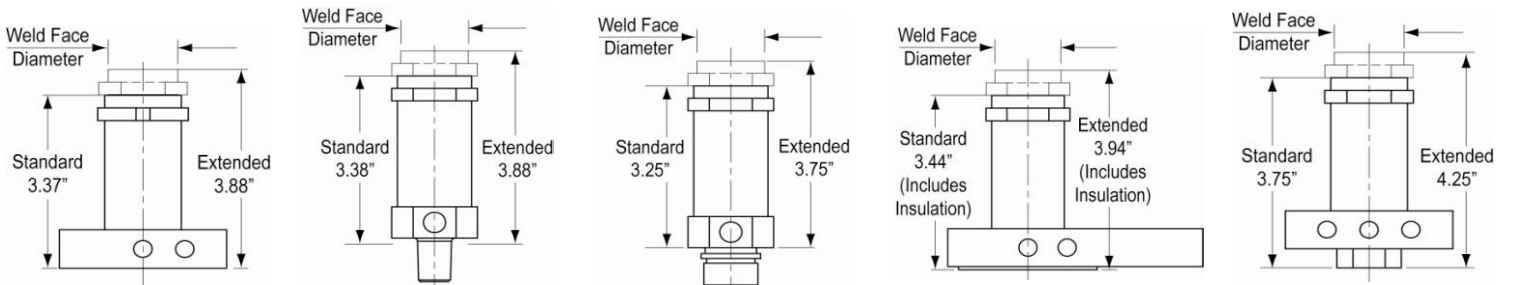
Yes, Clear the Nut

3. Weld Nut Electrode Smart Bodies (Recommended):

Smart Bodies are recommended for all new applications. For replacement units only, consider section 6. *Weld Nut Electrode Legacy Bodies* below.

3.1. Smart Body Styles:

Note: Each Standard and Extended dimensions below apply to all body series (200, 300, and 400).



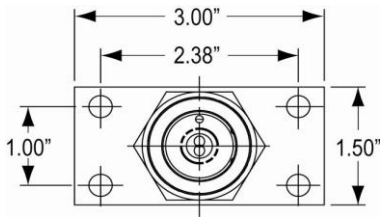
| | | | | |
|---------------------------------------|--------------------------------------|---|---|--|
| <input type="radio"/> A* (Base Mount) | <input type="radio"/> B (4 RW Taper) | <input type="radio"/> F (7/8-14 Thread) | <input type="radio"/> H* (Base Mount With Cable Lug (17/32" clearance hole for 1/2" screw)) | <input type="radio"/> K* (Base Mount with Contact) |
| | <input type="radio"/> C (5 RW Taper) | <input type="radio"/> G (1-12 Thread) | | |
| | <input type="radio"/> D (6 RW Taper) | | <input type="radio"/> J* (Base Mount With Cable Lug (Tapped hole for 1/2-13 screw)) | |
| | <input type="radio"/> E (7 RW Taper) | | | |

* Refer to section 4. *Mounting Dimensions for Base Mount Smart Body Styles* below for mounting details.

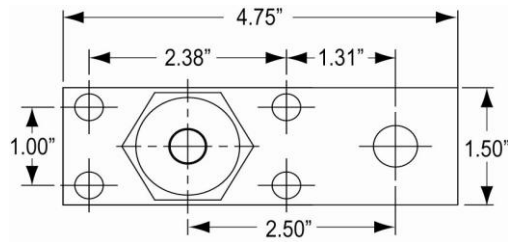
3.2. Body Length: Standard Extended

3.3. Series: 200 (0.88" Standard Weld Face Diameter) 300 (1.25" Standard Weld Face Diameter) 400 (1.50" Standard Weld Face Diameter)

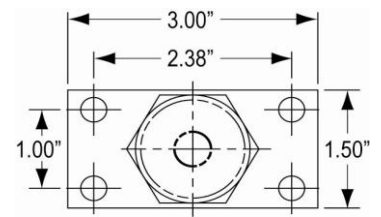
4. Mounting Dimensions for Base Mount Smart Body Styles:



A Style



H&J Style



K Style

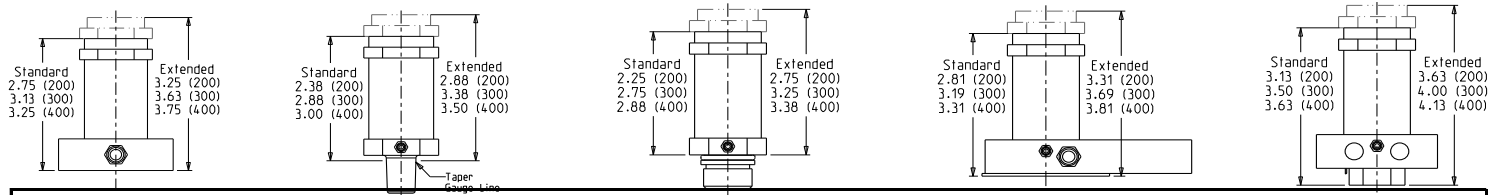
Note: Base units come with 1/4-20 screws for mounting.

5. Backup (Upper) Electrode:

- CenterLine to Recommend
- Customer to Specify (Consult the CenterLine Resistance Welding Product Guide, page 5-7)
- Not Applicable

6. Weld Nut Electrode Legacy Bodies:

Note: Legacy 200 Series must use extended bodies with Smart Electrode Systems. Standard 200 Series cannot be used with SE Systems.



- A** (Base Mount)
- B*** (4 RW Taper)
- C (5 RW Taper)
- D (6 RW Taper)
- E (7 RW Taper)
- F (7/8-14 Thread)
- G (1-12 Thread)
- H** (Base Mount With Cable Lug (17/32" clearance hole for 1/2" screw))
- J** (Base Mount With Cable Lug (Tapped hole for 1/2-13" screw))
- K** (Base Mount with Contact)

** For mounting dimensions of the base mount legacy body styles consult the *CenterLine Resistance Welding Product Guide*, page 1-8.

*** On body style 'B' add .25 to length shown.

7. Comments:

Please email completed form to: info@cntrline.com

CenterLine Automation Components Division • 655 Morton Dr. • Windsor, ON, Canada • N9J 3T9

PHONE: 1-800-268-8330 • FAX: 519-734-2016

www.cntrline.com

NWE-CF-EL-1.0.1-0909